

70, Podar Chambers, S.A.Brelvi Marg, Fort, Mumbai, INDIA

Tel: +91 22 2261 8334/8461, Email: info@transtecoverseas.com, Web: www.transtecoverseas.com



SLAVE DOLLY NARROW EDGE LEADING (NEL)

DESCRIPTION:-

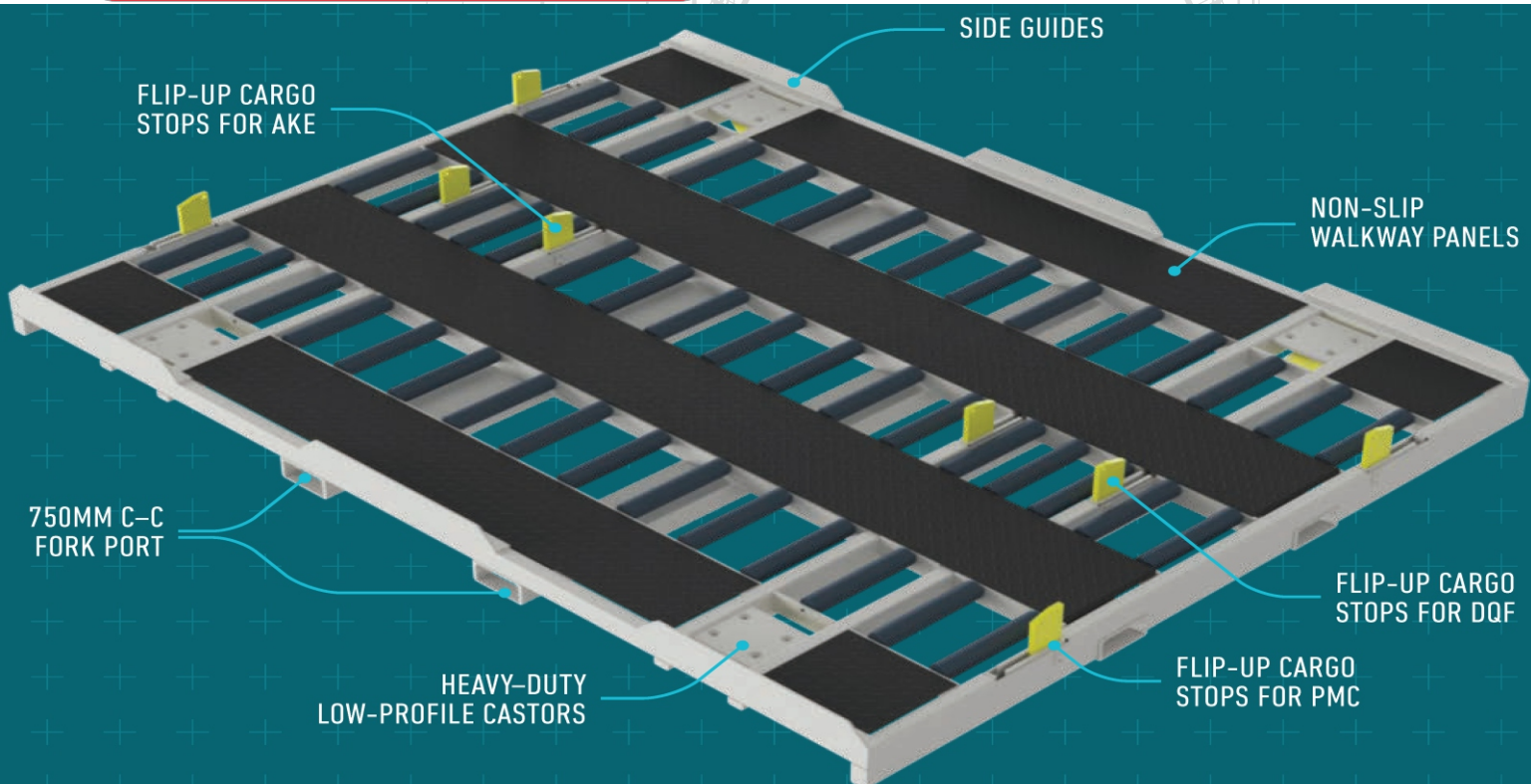
Slave Dollies enhance flexibility of warehouse operations. Slave Dollies allow safe transportation of ULDs and can be utilized as build-up or breakdown stations. Flip up cargo stops contain the cargo during transportation.

SPECIFICATION:-

Operating Height: 200mm
Operating Dimensions: 3270mm x 2540mm
SWL: 6800kg

OPTION:-

→ Wide Edge Leading (WEL)

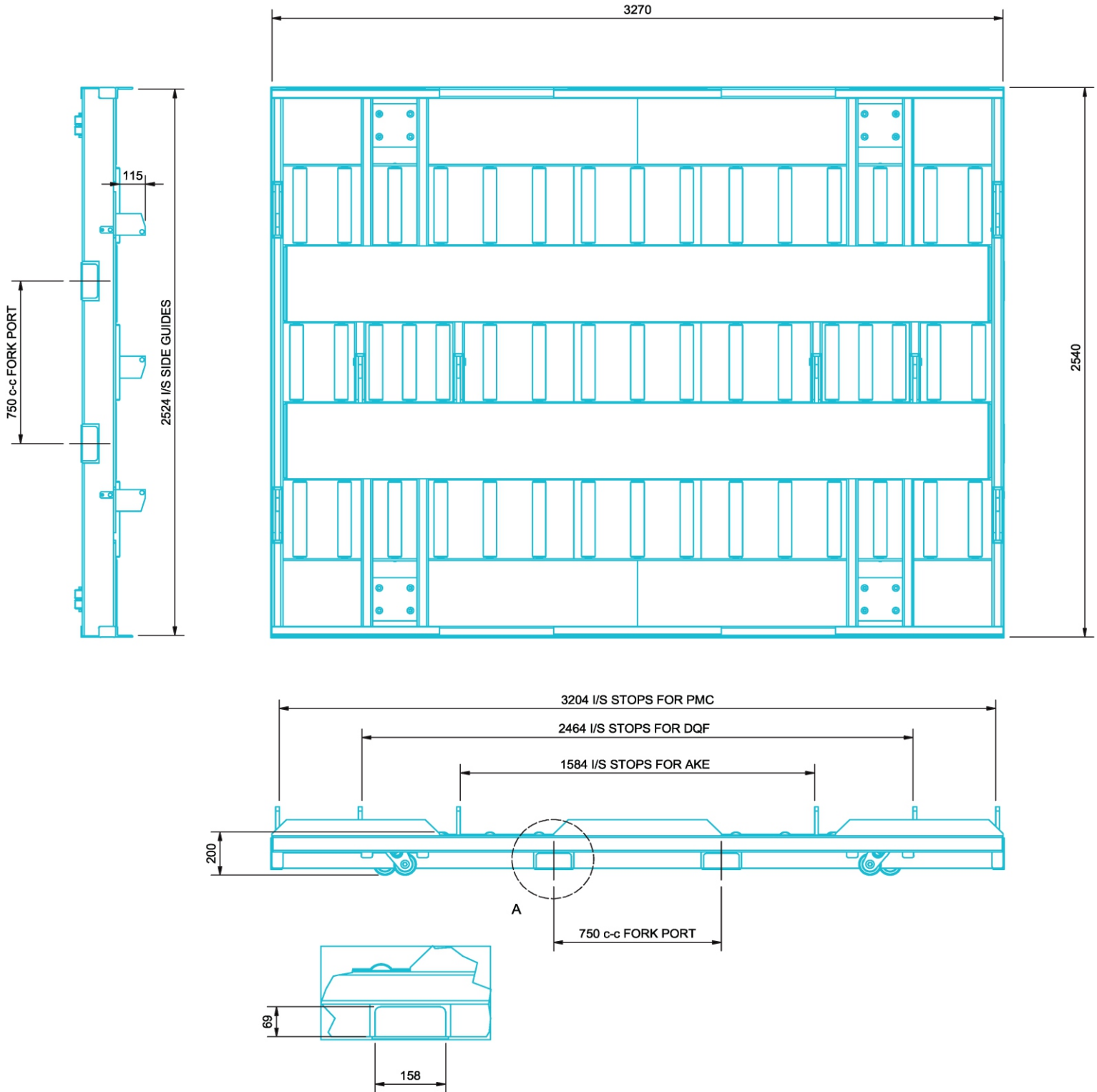


70, Podar Chambers, S.A.Brelvi Marg, Fort, Mumbai, INDIA

Tel: +91 22 2261 8334/8461, Email: info@transtecoverseas.com, Web: www.transtecoverseas.com



DRAWING



In collaboration with

